



User Manual for Parcel Drop Box

Read all instructions before using drop box.

WARNING

Barska does not guarantee that its products will absolutely stop theft, vandalism, burglary. Our products are only a deterrent to such acts.

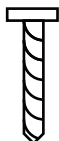
The parcel drop box must be mounted to the floor. Be aware of the load bearing. Failure to do so can result in personal injury and/or damage to property.

Mounting Instructions

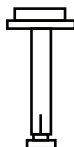
Use appropriate tools when performing work and always use eye protection floor mounting.

Mounting Screws:

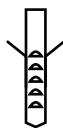
For Wood x 4



For Concrete x 4

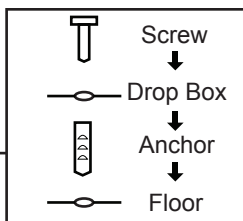
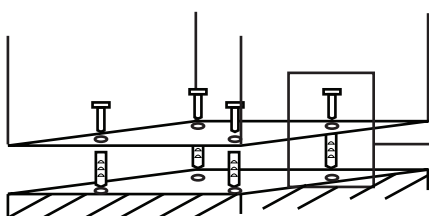
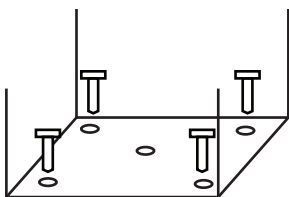


x4



Floor Mounting

- Mark the exact position onto the floor.
- Use proper drill tools depending on the type of floor you are mounting the drop box (wood, tile, or concrete).
- Drill the appropriate size holes for the anchors you are using.
- Carefully press the anchor into the holes at this time.



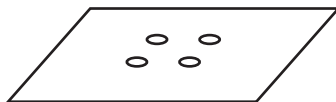
- Mount the safe by running screws from inside of the safe and securing to anchors; ensure the parcel drop box mounted securely.

Plates

Optional

Hole Plate

Propose is fixed hole. It can be place under the drop box.



Partition Plate

This plate is installed inside the drop box at the bottom of the box at 20-30 cm.

The plate inside is removable. Adding on screw is to prevent the plate moves inside but it is removable. If do not want to use the inside plate, take off the screw and remove the plate and use the black plastic screw to seal the hole or put the screw back.

Side View

